

SPACE SAVER VENTURI AND EDUCTORS

“HIGH EFFICIENCY IN A SMALL PACKAGE”

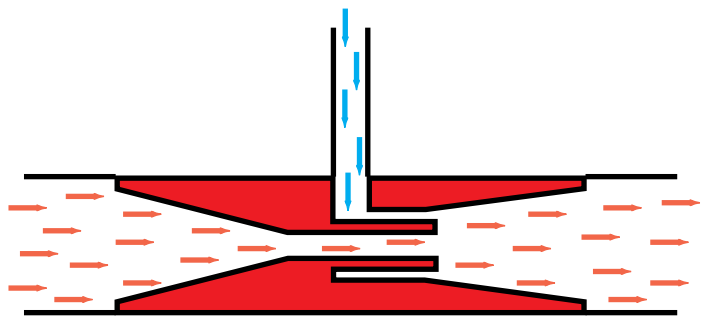
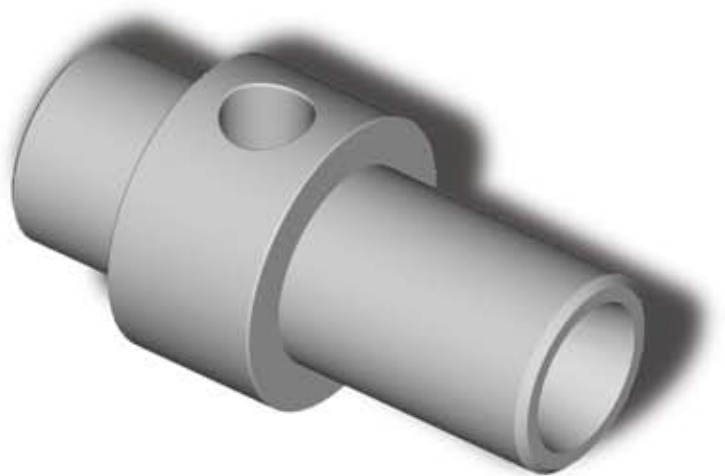
DETAILS

CPS, an industry leader in the design and production of skid mounted water and chemical processing equipment produces a family of products aimed at the chemical and water treatment market.

Born of necessity, the space saving eductors designed by CPS are installed in water treatment and cooling tower systems worldwide where space requirements demand their use. The high performance eductors typically exhibit a 3:1 suction ratio (motive flow vs. suction). Due to careful design of the inlet and outlet cone pressure drop and efficiency are maximized while minimizing boundary layer friction.

The base models are produced in type 1 PVC, however, they may be readily fabricated from a wide variety of materials.

The air, gas or water induction ratio is easily controlled by a valve. The venturis are specified based on inlet pressure, flow, back pressure and required suction. Additional taps may be provided for the purpose of mixing or aerating additional volumes.

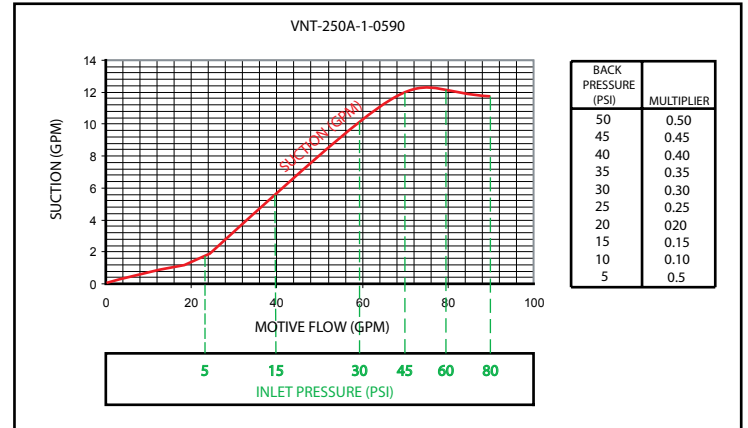


Control & Power Systems, Inc.

17 SPIELMAN ROAD, FAIRFIELD, NJ 07004 • 973-575-3300 PHONE • 973-575-5300 FAX • WWW.C-P-S.COM

SPECIFICATIONS

CPS will gladly assist you in ordering VNT Series eductors to your exact specifications. Please provide us with basic details of your requirements such as inlet pressure, desired flow, back pressure and required suction and we will specify the precise venturi for your application.



OUR COMPANY

Engineering Services

Lifecycle Documentation, Functional Requirement Specification (FRS), Control Strategy Development, Hardware Specification (HDS), Software Specification (SDS), Detailed Design Specification (DDS), Instrumentation Specification, Mechanical Skid Design, CAD Drawings (2D, 3D), PLC/DCS Programming, MMI, SCADA Configuration

Fabrication Services

Custom Skid Fabrication, Control Panel Fabrication, UL (508A, 698A, 698B), CUL, CE Certification, Intrinsically Safe, Explosion Proof, Welding, Electrical & Power, Piping & Tubing, Pneumatic & Hydraulic Systems, Painting, Installation

Integration Services

S88 Batch, Electronic Batch Records (EBR), 21 CFR Part 11, PLC Systems (Every Major Brand), SCADA Software (Every Major Brand), Data Bases (Every Major Brand), Historians, Networking, Wireless, WEB Enabled, Data Acquisition

Quality Assurance

Formal and Audited Quality Management System, Factory and Site Acceptance Testing, System Performance Tests, Full Service Test Center, Electric, Hydraulic, Pneumatic, System Commissioning

Validation

21 CFR Part 11, Computer System Validation, VSD, IQ, OQ, PQ, Formal Commissioning

Instrumentation

Engineering, Installation, Calibration, Service contracts

STANDARD CONFIGURATIONS		
AVAILABLE SIZES		
MODEL	SIZE NPT	SUCTION TAP NPT
VNT-1.5	Ø 1.5"	Ø 0.50"
VNT-2.0	Ø 2.0"	Ø 0.75"
VNT-2.5	Ø 2.5"	Ø 0.75"
STANDARD END TYPES		
TYPE A: WELD END (Male)		
TYPE B: NPT		
MATERIAL		
TYPE 1: PVC (STANDARD)		
TYPE 2: CPVC		
TYPE 3: DELRIN		
TYPE 4: PVDC (KYNAR)		
TYPE 5: NYLON		
TYPE 6: STAINLESS STEEL (AISI 304 or AISI 316)		

Detailed performance data for standard sizes available upon request.

FOR MORE INFORMATION

PLEASE EMAIL:

PRODUCTS@C-P-S.COM



Control & Power Systems, Inc.

17 SPIELMAN ROAD, FAIRFIELD, NJ 07004 • 973-575-3300 PHONE • 973-575-5300 FAX • WWW.C-P-S.COM