

# CONTROL & POWER SYSTEMS, INC.

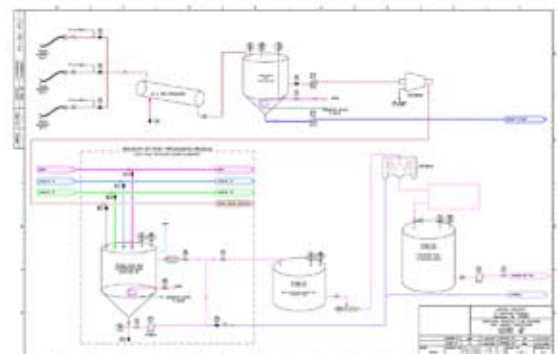
## CPS BIOFUELS PROJECTS

### LOUIS DREYFUS BIODIESEL PLANTS

CPS was selected for these projects on the basis of our experience with the process, fuel blending, fuel metering, fuel additives, and the control platform being utilized. For these projects CPS supplied design engineering, system programming, fabrication, installation supervision, instrumentation calibration, startup services, and operator training.

- CPS designed and installed the automation package for the integrated Louis Dreyfus soybean oil extraction and biodiesel project in Claypool, Indiana. The control system utilizes Allen Bradley-Contrologix software. The system controls and monitors the entire biodiesel production operation including the glycerin, water and methanol recovery processes. The plant produces over one million tons of soybean meal and 90 million gallons of soybean oil annually. The biodiesel plant also has a nameplate of 90 million gallons. This plant was commissioned in April 2008.

- Coming off the successful start-up in Indiana, CPS has also designed and is currently commissioning the automation package for the similarly sized integrated Louis Dreyfus plant in Argentina. The project includes the design and installation of a sophisticated PLC control system utilizing Siemens PLC and HMI with Wonderware ArchestraA Technology. In addition to the entire biodiesel process, the CPS provided system also controls and monitors the crude oil extraction process. The commissioning date for this plant is June 2008.



### VIRIDIA ENERGY, INC.

CPS was engaged on a turnkey basis in 2007 to engineer, build install and operate biodiesel plants for Viridia. Full control systems will also be provided. Process designs are completed. Viridia's first plant will be located at a NJ wastewater treatment plant, and is currently in the permitting stage.

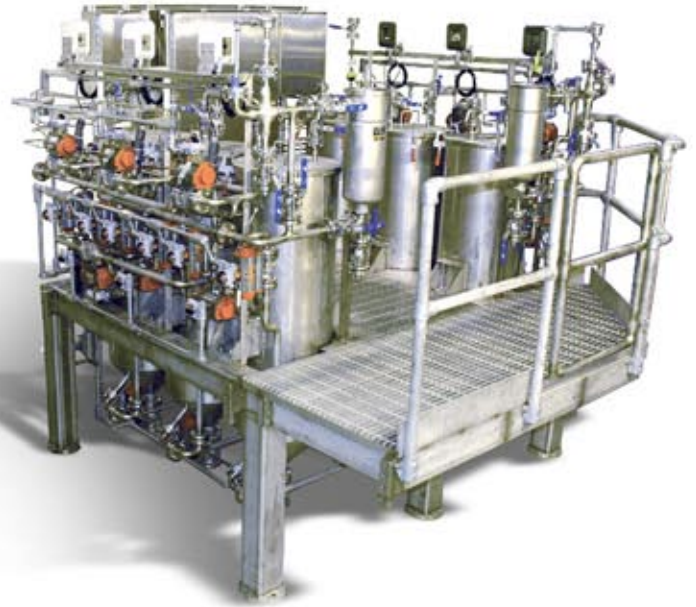


**Control & Power Systems, Inc.**

17 SPIELMAN ROAD, FAIRFIELD, NJ 07004 • 973-575-3300 PHONE • 973-575-5300 FAX • WWW.C-P-S.COM

# CONTROL & POWER SYSTEMS, INC. OVERVIEW

## PARTIAL LIST OF CUSTOMERS



## FULL SERVICE INTEGRATION

At CPS we recognize outsourcing has become a vital strategy for many of our clients. CPS offers a full range of services:

*Complete Turnkey Engineering, ISA Compliant P&IDs, Component & Instrument Selection, Mechanical Layout & Design, Wiring Diagrams, Schematics (Electrical, Hydraulic & Pneumatic), Programming, Fabrication, and Plant Operations*

## CODES & STANDARDS

Control & Power Systems Inc. skids and enclosures conform to all national codes and standards:

*ANY NEMA Ratings: NON HAZARDOUS - Types 1,3R,4,4X,12, HAZARDOUS - Types 7,9  
Purged Enclosures: Type X, Type Z, Increased Safety*

## CERTIFICATION

CPS has taken the necessary steps to offer certification on our skids and enclosures:

*UL 508A - Standard Industrial Enclosures, UL 698A & B - Explosion Proof Enclosures, CUL Certification (Canadian), CE Marking (European)*



## CSIA CERTIFIED

CPS is a proud member of the Control System Integrators Association. The leading industry association setting the standard for controls automation.



**Control & Power Systems, Inc.**

17 SPIELMAN ROAD, FAIRFIELD, NJ 07004 • 973-575-3300 PHONE • 973-575-5300 FAX • WWW.C-P-S.COM